

Export a Catalog in Commerce Server CatalogManager

The Catalogs in Commerce Server CatalogManager can be exported to an XML file if we need to move the Catalog to a different machine having CS installed.

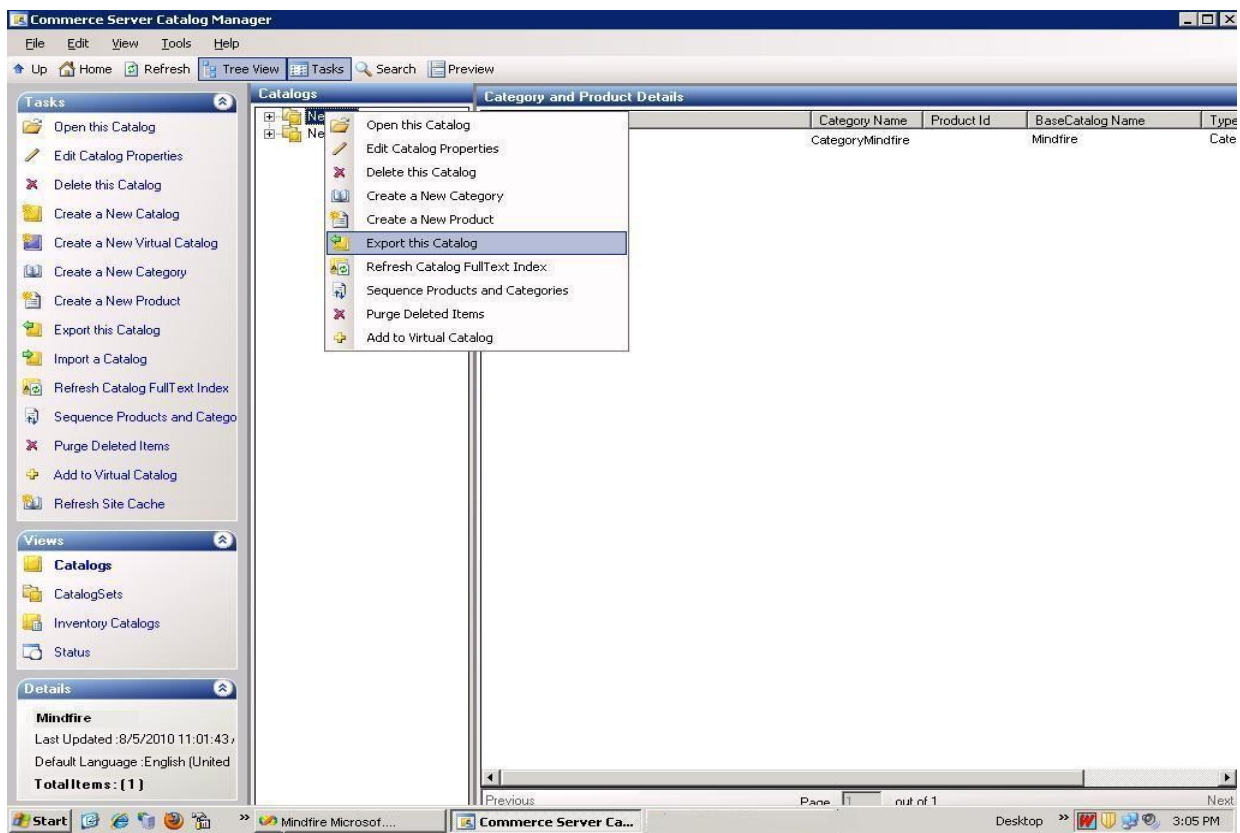
We can export the entire Catalog or specific products and categories have been added or modified from a specified date.

The following steps can be followed for exporting a catalog from the Catalog Manager.

STEP – I(Open the CatalogManager):

Start>All Programs>Commerce Server 2009>CatalogManager.

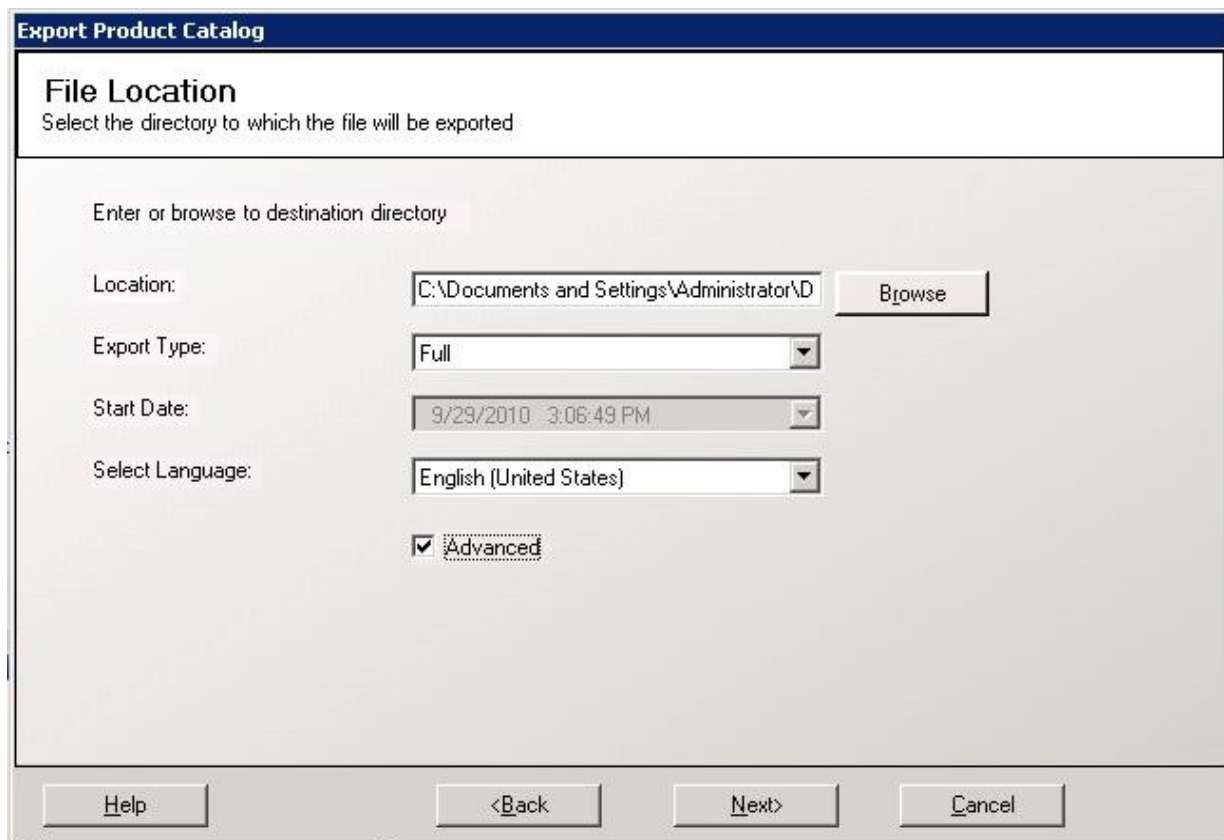
STEP – II(Open the Catalog export Wizard):



STEP – III(Click Next on the Welcome page of CatalogExportWizard):



STEP – IV(Giving XML file location to save & choose ExportType, Language):



Location:

Here we can type or move to the location where we want to export the catalog XML file.

Export Type:

- 1) Full: Export the entire Catalog.

- 2) Incremental: Export data based on a specified StartDate.
- 3) Expression-based: Allow us to define the parts of the catalog to be exported by using the expressions.

StartDate:

We can select the start date of the incremental export from the drop-down calendar only if Incremental in the Export Type box is selected.

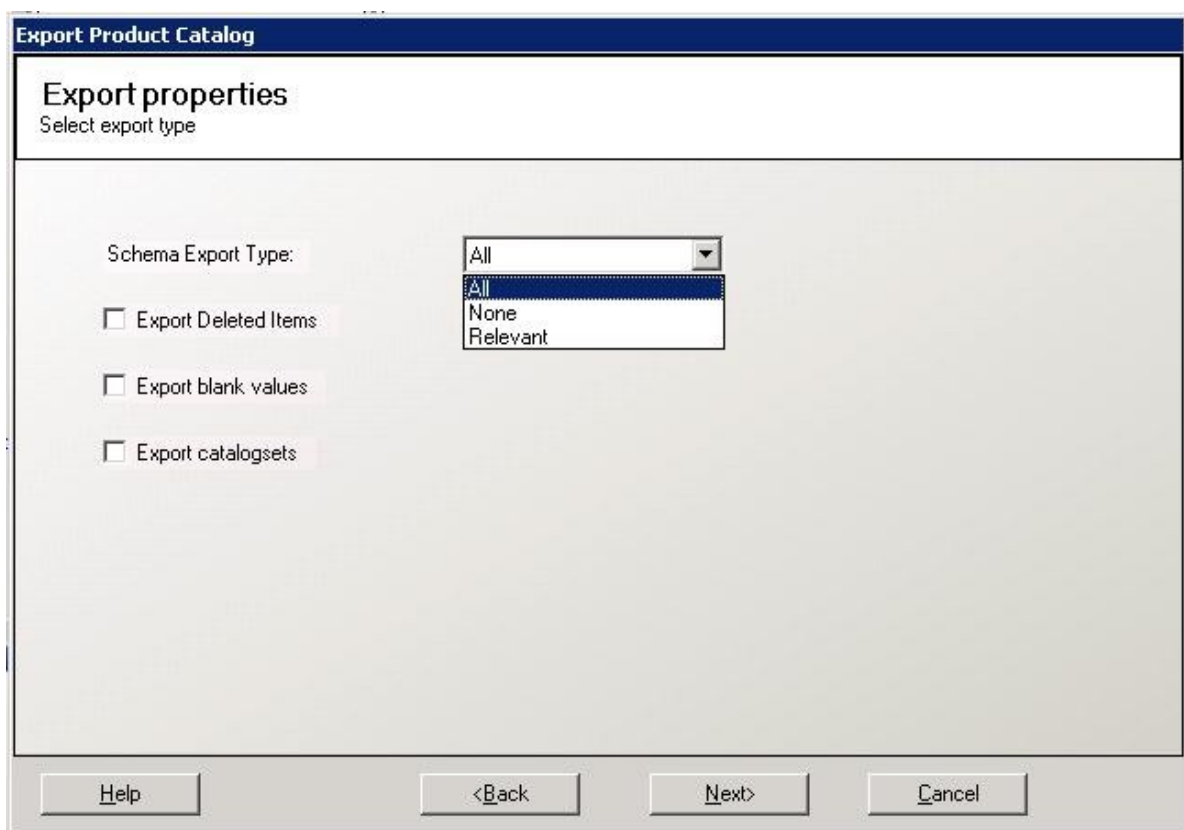
SelectLanguage:

We can select the language in which we want to export the catalog.

Advanced:

This can be checked if advanced properties wizard needs to be filled out.

STEP – V(Set the Advanced properties values):



SchemaExportType:

- 1) All: Export all catalog schemas and data.
- 2) None: Export data only.
- 3) Relevant. Export only those schemas and the data that are used in the catalog that we are exporting.

Export Deleted Items:

Check to export deleted categories, products, or product variants.

Export Blank Values:

Check to export properties having blank values.

Export CatalogSets:

Check to export the Catalog Sets also.

After selecting the required options click **Next** to go for the next page.

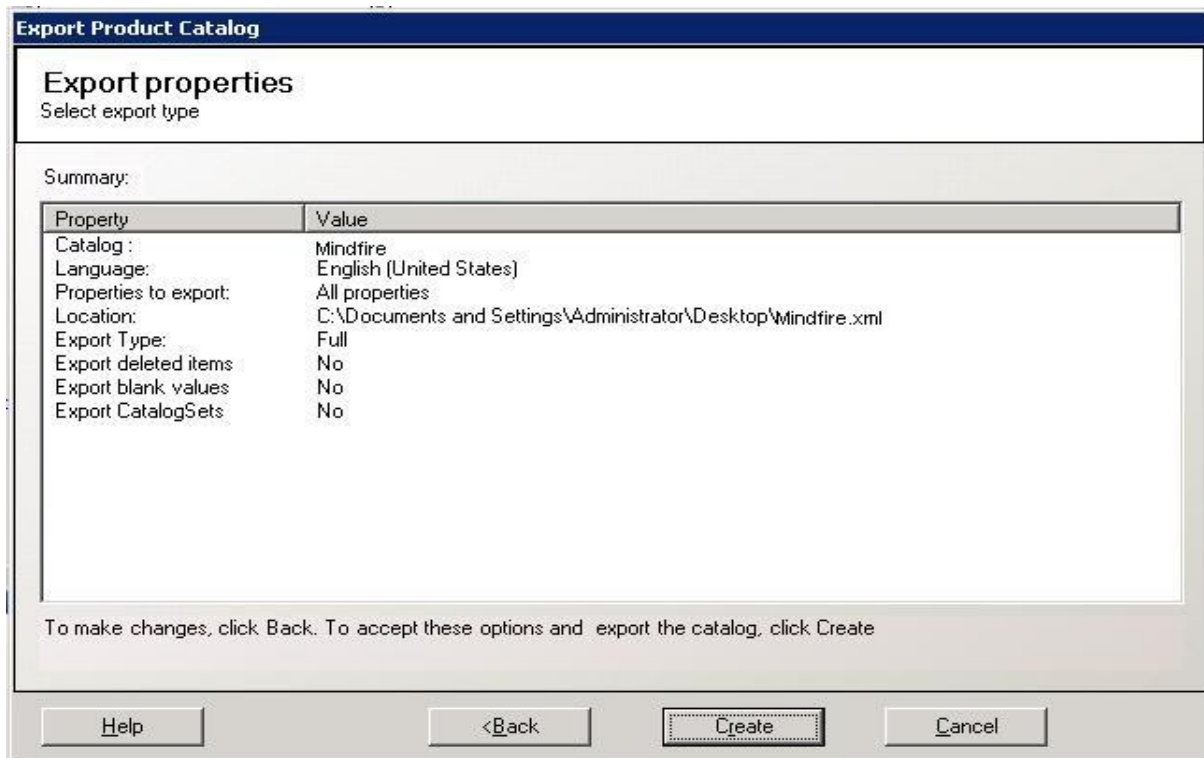
STEP – VI(Set the Advanced properties values):

The screenshot shows a dialog box titled "Export Product Catalog" with a sub-header "Advanced Export Properties". Below the sub-header, it says "Set the following advanced properties (optional)". The main area is labeled "Select properties to export:" and contains a list of 20 properties, each with a checked checkbox. To the right of the list are two buttons: "Select All" and "Deselect All". At the bottom of the dialog are four buttons: "Help", "<Back", "Next>" (which is highlighted with a dotted border), and "Cancel".

Property	Checked
AcidFree	Yes
BaseCatalog Name	Yes
BasisWeight	Yes
BrandRelativePrice	Yes
BrandType	Yes
Brightness	Yes
Caliper	Yes
CarbonNeutral	Yes
CartonsPerPallet	Yes
Colour	Yes
ColorDuplexBack	Yes
ColorDuplexFront	Yes
Color Family	Yes
CottonContent	Yes
CtnNetWeight	Yes
List Price	Yes
DigitalFlag	Yes
Display Name	Yes

On the Advanced Export Properties page, we can select the properties we want to export from the product catalog, and then click **Next**.

STEP – VII(Confirm the export properties and complete the Export Product Catalog Wizard):



Here click the **Create** button after confirm to export the Catalog.



Now at last click on the Finish button to end the export operation and the CatalogExport Wizard will be closed. We can get the XML generated for the Catalog we mentioned at the specified path.

We can see the status of the export of the Catalog in percentage value by clicking on the

Status option present at the TaskPane as shown in the figure.

