

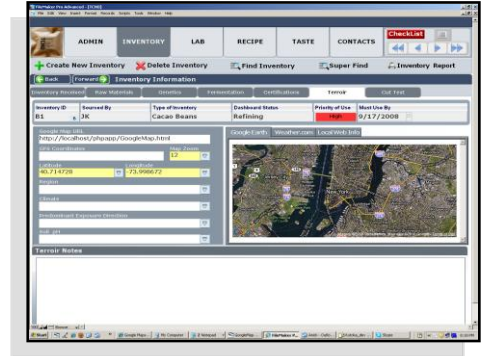


Chocolate Recipe Builder System

Executive Summary

This case study demonstrates the development of a system in FileMaker, which keeps track of the entire recipe test a user runs until he/she achieves a perfect one. This application helps in storing records of the numerous recipe tests conducted and helps user to finalize on the ideal recipe.

One of our clients aimed to have a system designed for chocolate factories to keep track of the chocolate making process with the system performing cross platform usability, fonts, graphics and formats made available for touch screen monitors. They were looking to develop this system using FileMaker in order to overcome the manual process.



Checking the track record of Mindfire in FileMaker, the client approached for a solution to his needs. He was touched upon the very first time he interacted with our technical person and immediately granted permission to start the development work. Mindfire delivered a perfect solution to the client by developing a relational database developed in FileMaker that keep track of the processes/steps followed during the building of different types of chocolate recipes with different flavors and tastes. Six different modules were created to keep track of the proceedings.

About our Client

Client Software Development company | **Location** San Francisco, USA | **Industry** IT

Business Situation

The purpose of the client approaching Mindfire Solutions FileMaker team was to develop a system to be used by chocolate factory for keeping track of chocolate making process and also to automate it. They also aimed at designing the system for touch screen monitors to enter exact data on a desktop workstation during the chocolate recipe building process.

Mindfire Solutions delivered a system that exactly met client's objective. The system had cross platform usability, fonts, graphics and formats and was also designed for touch screen monitors. The system built, was a relational database developed in FileMaker that keep track of the processes/steps followed during the building of different types of chocolate recipes with different flavors and tastes. It also uniquely identifies the beans and track how they are used. Six different modules were developed and implemented in the system which are: **Inventory, Lab, Recipe, Taste, Contacts, and Admin.**

Technologies:

FileMaker Pro 9 Advanced