

## How To Setup a DNN Development Site

### Using:

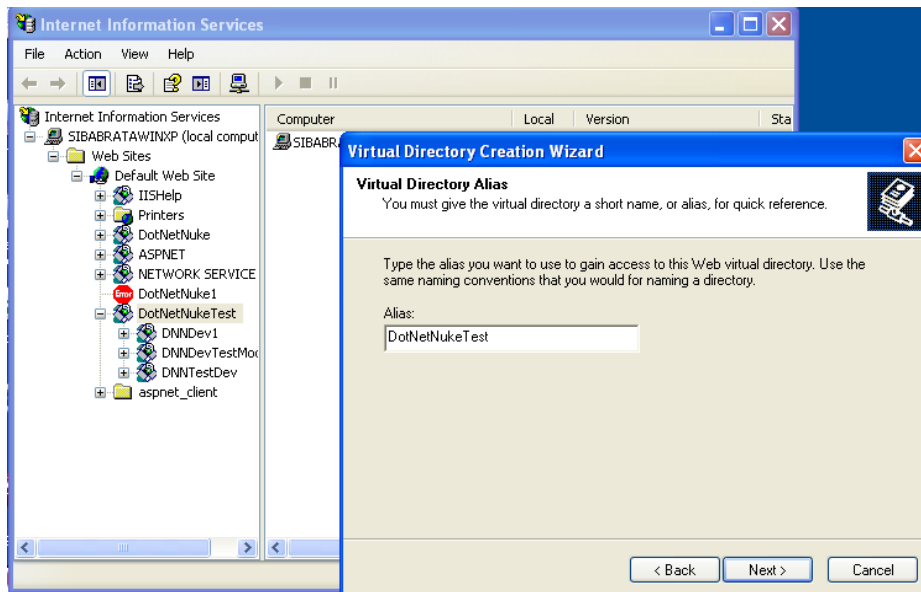
Windows XP, Ms Visual Web developer 2008 Express Edition and Sql Server 2005 Express Edition.

For creating a DotNetNuke development website we need to setup IIS, create a database and then create a new website.

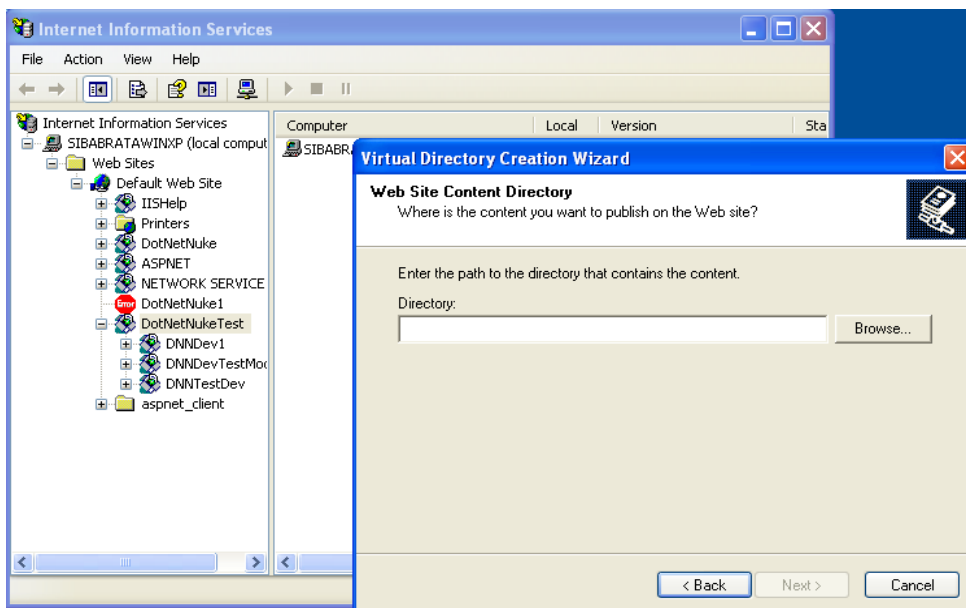
### 1. Setup IIS:

a) Go to Control Panel → Administrative Tools → select IIS

→ Creating a new site, then give the alias name.

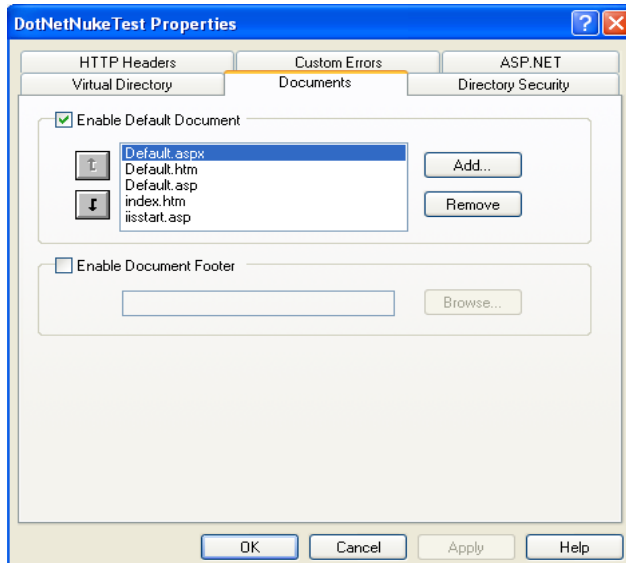


→ Set the path for virtual directory.

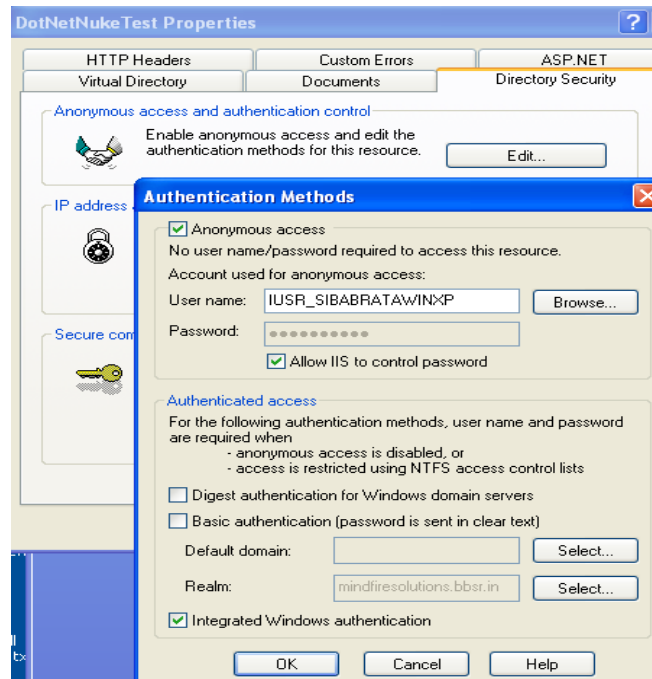


b) Then Right Click on Virtual directory Go to Properties and set following properties:

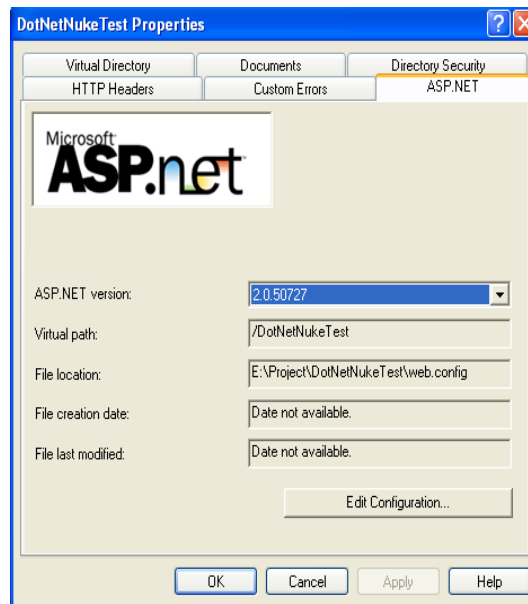
→ Make sure Default.aspx should be present at top.



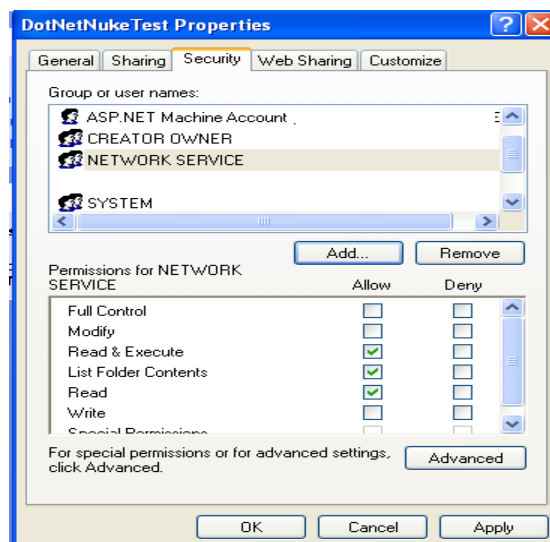
→ Check Integrated windows authentication option present under Directory Security Tab.



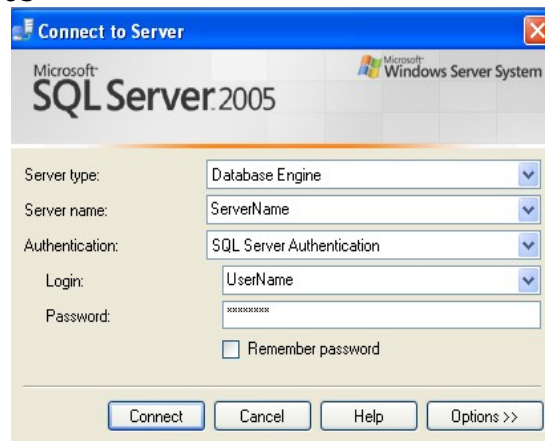
→ Select Asp version as 2.0.50727



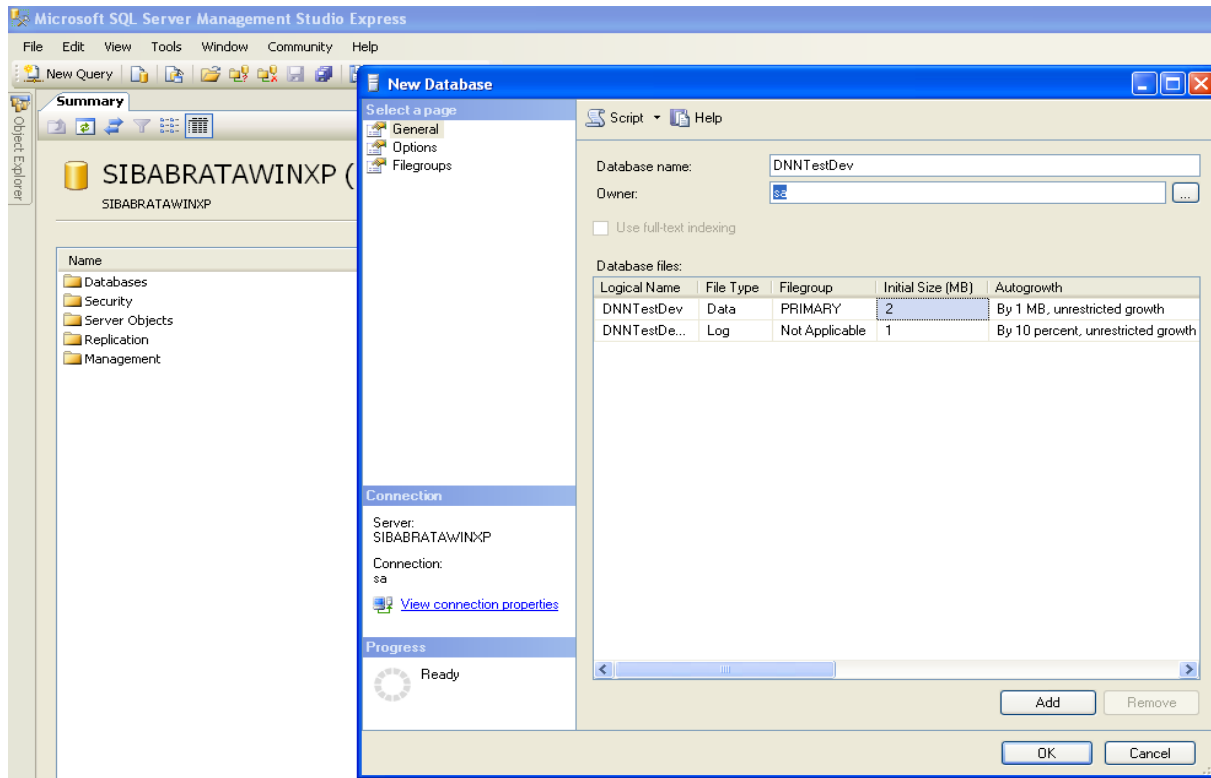
c) Then right click on Virtual directory go the Share and security property, add two users as AspNet and Network Service and give Full Control -



2. Creating a database for DNN development website -  
a) Login to the sql server 2005

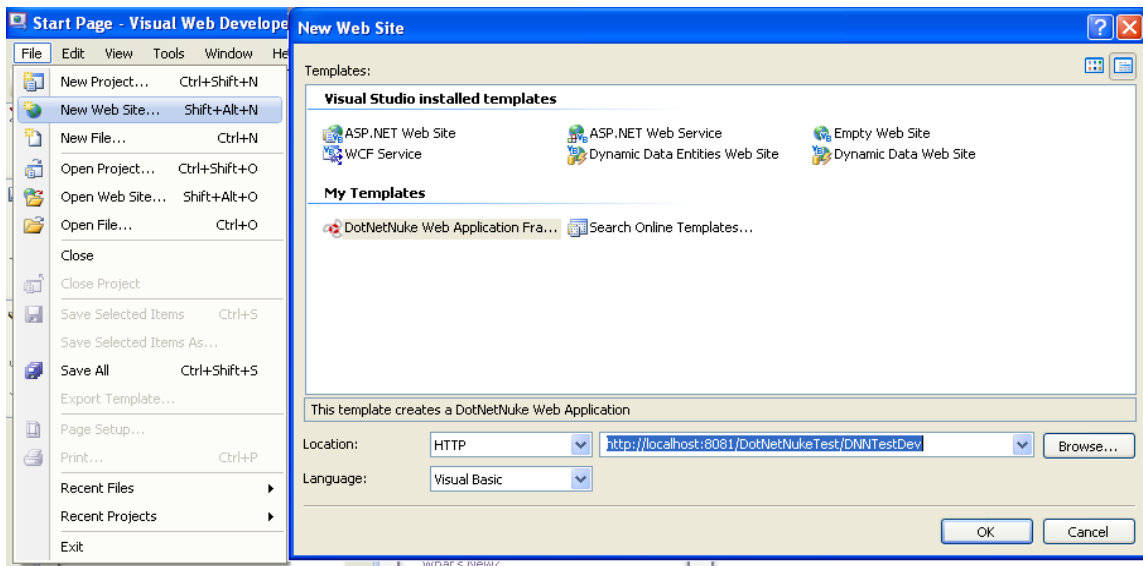


b) Create a new database:

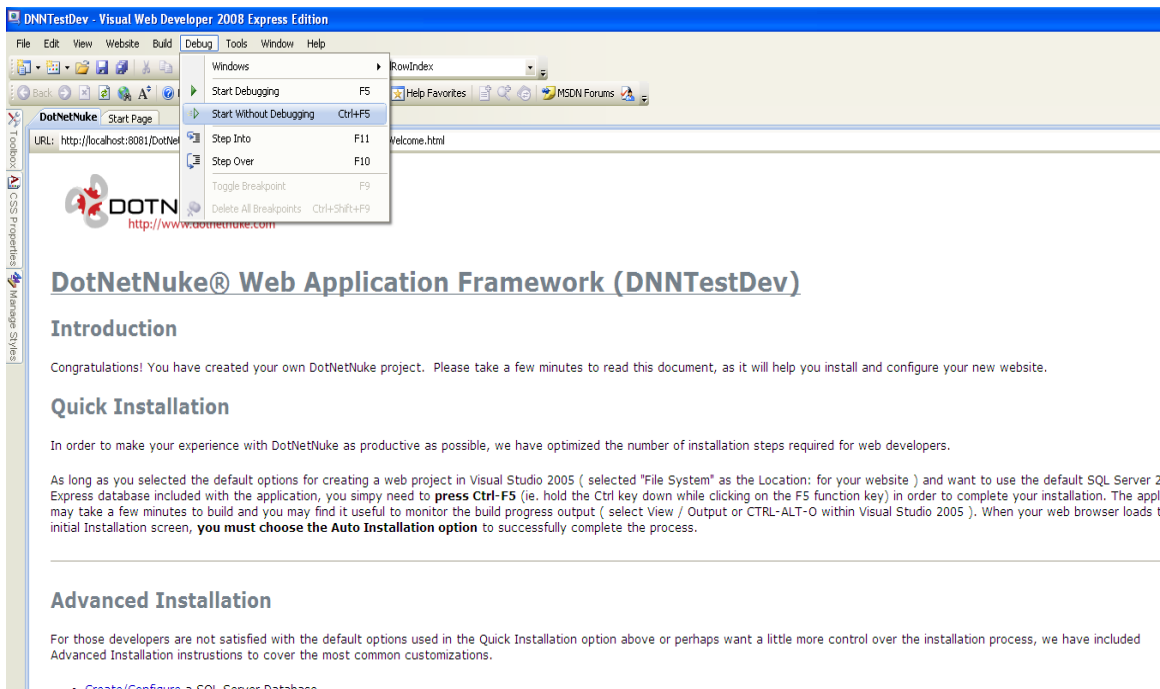


3. Then open the Microsoft visual studio to create new website

a) Select File New Website, then select DotNetNuke Web Application. In Location type select HTTP and select the path for newly created virtual directory.



b) Then DotNetNuke Web Application Framework page is gets displayed. Then Press Ctrl + F5 to Start without debugging.



c) Select Typical installation option and Press Next-



### DotNetNuke Installation Wizard - Version 04.09.03

Welcome to the DotNetNuke Installation Wizard. This wizard will guide you through the installation of your DotNetNuke Application.

You may navigate through the Wizard using the Next and Previous buttons. On some pages you will see a third button "Test ...". This button will allow you to test the configuration before you continue, to see the effects of changes.

The first step is to select the installation method to use and to choose the language you would like to use for the Installation.

#### Select Installation Method:

- Custom** - The "Custom" installation method provides you with the ability to completely customise your DotNetNuke installation. Select this option if you wish to control which optional components get installed.
- Typical** - The "Typical" installation method makes some "typical" choices for you.
- Auto** - The "Auto" installation method bypasses the Wizard completely and uses the legacy Auto-Install procedure.

#### Choose Language:

English

[Next](#)

d) Then test file permission and press Next link.



### Checking File Permissions

DotNetNuke has extensive file upload capabilities for content, modules, and skins. These features require custom security settings so that the application is able to create and remove files in your website.

This page checks the current file permissions to ensure that these features will work correctly.

#### File Permissions Summary:

- Create Folder
- Create File
- Delete File
- Delete Folder

**Your site passed the permissions check.**

[Test Permissions](#)

[Previous](#)

[Next](#)

e) Then Select SQL server Database option, give server name, database name, userId and password.  
Press Next.



## Configure Database Connection

You can configure the database settings used by DotNetNuke on this page. If you are installing DotNetNuke in a "Hosting Account" your hosting provider should have provided you with the information.

There are two options for SQL Server 2005/2008. SQL Server 2005 and SQL Server 2008 support the use of Database Files. In most situations you should choose the Database option, but if you are using SQL Server 2005/2008 Express then you should use the File option.

<b>Select Database:</b>	<input type="radio"/> SQL Server 2005/2008 (Express) File	<input checked="" type="radio"/> SQL Server 2000/2005/2008 Database
<b>Server:</b>	<input type="text" value="ServerName"/>	Enter the Name or IP Address of the computer where the Database is located. (if using Oracle enter the Data Source (SID))
<b>Database:</b>	<input type="text" value="DNNTTestDev"/>	Enter the Database name
<b>Integrated Security:</b>	<input type="checkbox"/>	Check this if you are using SQL Server's Integrated Security, which means you will be using your Windows account to access SQL Server. If you are using SQL Server Express then you will most likely need to check this option. If you have been given a UserId/Password to access your Database, leave this unchecked, and provide the UserId/Password combination.
<b>User ID:</b>	<input type="text" value="UserName"/>	Enter the UserID for the Database
<b>Password:</b>	<input type="password" value="•••••"/>	Enter the Password for the Database
<b>Run as db Owner:</b>	<input checked="" type="checkbox"/>	Check this if you are running the database as Database Owner - if left unchecked you will be running as the User ID specified
<b>Object Qualifier:</b>	<input type="text"/>	Enter an optional "prefix" to use for all your database objects - this helps ensure that there are no object name clashes.

[Test Database Connection](#) | [Previous](#) | [Next](#)

f) this should show the success status on installing of database for DotNetNuke website.



### Run Database Installation Scripts

The installation of the database scripts should have started when this page loaded. The Next button will be disabled until the Installation of the Scripts is complete.

Completed Installing Database Scripts

```
Upgrading Database to Version 4.6.1...Success
Upgrading Database to Version 4.6.2...Success
Upgrading Database to Version 4.7.0...Success
Upgrading Database to Version 4.8.0...Success
Upgrading Database to Version 4.8.1...Success
Upgrading Database to Version 4.8.2...Success
Upgrading Database to Version 4.8.3...Success
Upgrading Database to Version 4.8.4...Success
Upgrading Database to Version 4.9.0...Success
Upgrading Database to Version 4.9.1...Success
Upgrading Database to Version 4.9.2...Success
Upgrading Database to Version 4.9.3...Success
Installation of Database Complete
```

[Next](#)

g) Then you need to set password for a Host user.



### Configure Host User

In this page you should provide the information for the Host or SuperUser User Account. This user has access to all portals created on the site, and care should be taken to provide a UserName/Password combination that is difficult to "hack" by malicious users.

First Name:	<input type="text" value="SuperUser"/>
Last Name:	<input type="text" value="Account"/>
User Name:	<input type="text" value="host"/>
Password:	<input type="password" value="....."/>
Confirm Password:	<input type="password" value="....."/>
Email Address:	<input type="text" value="host"/>

[Next](#)

h) Need to set password for Admin user. Then Press Next.





### Portal Title:

In this page you will configure the Host (or initial) Portal (website).

You will need to provide an administrator user account. This user has access to all functionality of the portal, and as with the Host User care should be taken to provide a UserName/Password combination that is difficult to "hack" by malicious users.

### Portal Administrator

<b>First Name:</b>	<input type="text" value="Administrator"/>
<b>Last Name:</b>	<input type="text" value="Account"/>
<b>User Name:</b>	<input type="text" value="admin"/>
<b>Password:</b>	<input type="password" value="....."/>
<b>Confirm Password:</b>	<input type="password" value="....."/>
<b>Email Address:</b>	<input type="text" value="admin@email.com"/>

### Portal Properties

<b>Portal Title:</b>	<input type="text" value="My Website"/>
<b>Template:</b>	<input type="text" value="Default Website"/>

[← Previous](#) | [Next →](#)

I) Then it will show Finished status.



### Congratulations

Congratulations, you have successfully installed DotNetNuke.

[→ Finished \(Goto Site\)](#)

j) Finally, the DNN website for module development is shown.

Mode:  View  Edit  Design

Add New Module  Add Existing Module

Page Functions: Add, Settings, Delete, Copy, Export, Import

Module:  Pane:    
 Title:  Insert:    
 Visibility:  Align:

Show Control Panel?

Common Tasks: Site, Users Roles, Files, Help, Solutions

---

[HOME](#) [ADMIN](#) [HOST](#)

You are here: [Home](#) SuperUser Account | [Logout](#)

TopPane		
LeftPane	ContentPane	RightPane
BottomPane		

▾ DotNetNuke® Community Edition

**DotNetNuke®** is the ideal platform for building professional websites with dynamic content and interactive features

Sibabrata Dash  
 Mindfire Solutions  
[www.mindfiresolutions.com](http://www.mindfiresolutions.com)